

Excel Macros by **ChatGPT**



CENTER ACROSS SELECTION **SHORTCUT**



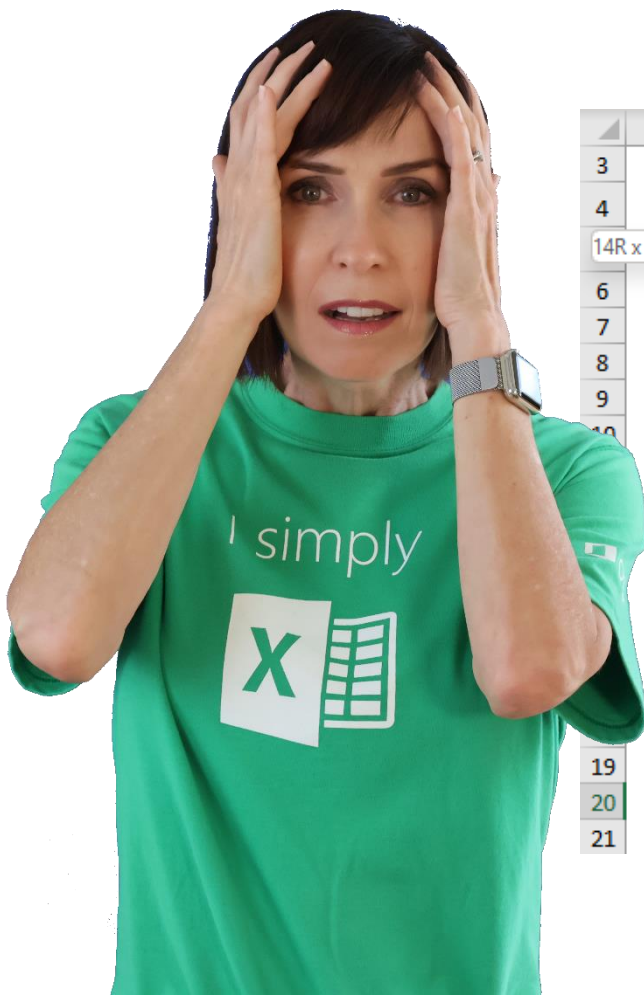
SWIPE

The Problem with Merge & Center

It prevents you from selecting a single column of cells, which you often want to do to summarise data.

Merge and Center is one of the **WORST** formats you can apply!

	A	B	C	D	E
3					
4		2020			
5		UK			
6		Bromley	232	24,757	
7		Coghill	81	4,029	
8				14,056	
9				40,826	
10				31,433	
11		Rayleigh	422	59,827	
12					
13		USA			6R x 1C
14		Bromley	58	7,554	
15			623	49,400	
16			885	120,626	
17			699	89,663	
18		Finchley	699	95,850	
19		Fuller	539	71,168	
20				=SUM(D14:D19)	
21				SUM(number1, [number2], ...)	



	A	B	C	D	E
3					
4		2020			
5		UK			
6		Bromley	232	24,757	
7		Coghill	81	4,029	
8		Farnham	170	14,056	
9		Gillingham	397	40,826	
10		Gloucester	209	31,433	
11		Rayleigh	422	59,827	
12					
13		USA			
14		Bromley	58	7,554	
15		Callahan	623	49,400	
16		Coghill	885	120,626	
17		Farnham	699	89,663	
18		Finchley	699	95,850	
19		Fuller	539	71,168	
20				=SUM(B6:D19)	
21				SUM(number1, [number2], ...)	

As soon as I cross the merged cells, the range expands!

I know I can use CTRL to select non-contiguous cells, but I shouldn't have to...and I don't have to!



The Solution - Center Across Selection

2020		
UK		
Bromley	232	24,757
Coghill	81	4,029
Farnham	170	14,056
Gillingham	397	40,826
Gloucester	209	31,433
Rayleigh	422	59,827

USA		
Bromley	58	7,554
Callahan	623	49,400
Coghill	885	120,626
Farnham	699	89,663
Finchley	699	95,850
Fuller	539	71,168

Format Cells

Number Alignment Font Border

Text alignment

Horizontal: Center Across Selection

Vertical: Bottom

Justify distributed

Text control

Wrap text

Shrink to fit

Merge cells

Right-to-left

Text direction: Context

It looks the same but doesn't prevent you selecting contiguous ranges.

	A	B	C	D	E
3					
4		2020			
5		UK			14R x 1C
6		Bromley	232	24,757	
7		Coghill	81	4,029	
8		Farnham	170	14,056	
9		Gillingham	397	40,826	
10		Gloucester	209	31,433	
11		Rayleigh	422	59,827	
12					
13		USA			
14		Bromley	58	7,554	
15		Callahan	623	49,400	
16		Coghill	885	120,626	
17		Farnham	699	89,663	
18		Finchley	699	95,850	
19		Fuller	539	71,168	
20				=SUM(D6:D19)	
21				[SUM(number1, [number2], ...]	

No interruption to summed range.

Header Centered Across Selection



The Next Problem

There's no shortcut on the Ribbon for Center Across Selection. It takes at least 4 clicks to apply it!



SWIPE

The Solution - ChatGPT

Ask ChatGPT to write a Macro that you can attach to an icon on the Quick Access Toolbar.



SWIPE

The Prompt

"Write a VBA Macro that will remove merged cell format from the selected cells and replace it with center across selection alignment."

Make it so I can assign the Macro to a button that I put on the Quick Access Toolbar."



The Response

vba

Copy code

```
Sub RemoveMergeFormatAndApplyAlignment()  
    Dim rng As Range  
    Dim cell As Range  
  
    ' Check if any cells are selected  
    If Selection.Cells.Count = 1 Then  
        MsgBox "Please select multiple cells to apply the formatting.", vbIn  
        Exit Sub  
    End If  
  
    ' Store the selected range in a variable  
    Set rng = Selection  
  
    ' Loop through each cell in the range  
    For Each cell In rng  
        ' Check if the cell is merged  
        If cell.MergeCells Then  
            ' Unmerge the cell  
            cell.MergeCells = False  
        End If  
  
        ' Apply center across selection alignment  
        cell.HorizontalAlignment = xlCenterAcrossSelecti  
    Next cell  
End Sub
```



Download Macro



SWIPE

Inserting the Code in Excel

1



to open VBA Editor

Microsoft Visual Basic for Applications - PERSONAL.XLSB

File Edit View Insert Format Debug Run Tools Add-Ins Window Help

Project - VBAProject

PERSONAL.XLSB - Module1 (Code)

```
Sub RemoveMergeFormatAndApplyAlignment ()
    Dim rng As Range
    Dim cell As Range

    ' Check if any cells are selected
    If Selection.Cells.Count = 1 Then
        MsgBox "Please select multiple cells to apply"
        Exit Sub
    End If

    ' Store the selected range in a variable
    Set rng = Selection

    ' Loop through each cell in the range
    For Each cell In rng
        ' Check if the cell is merged
        If cell.MergeCells Then
            ' Unmerge the cell
            cell.MergeCells = False
        End If

        ' Apply center across selection alignment
        cell.HorizontalAlignment = xlCenterAcrossSelection
    Next cell
End Sub
```

2. right-click PERSONAL.XLSB > Insert Module

3. Paste code from ChatGPT



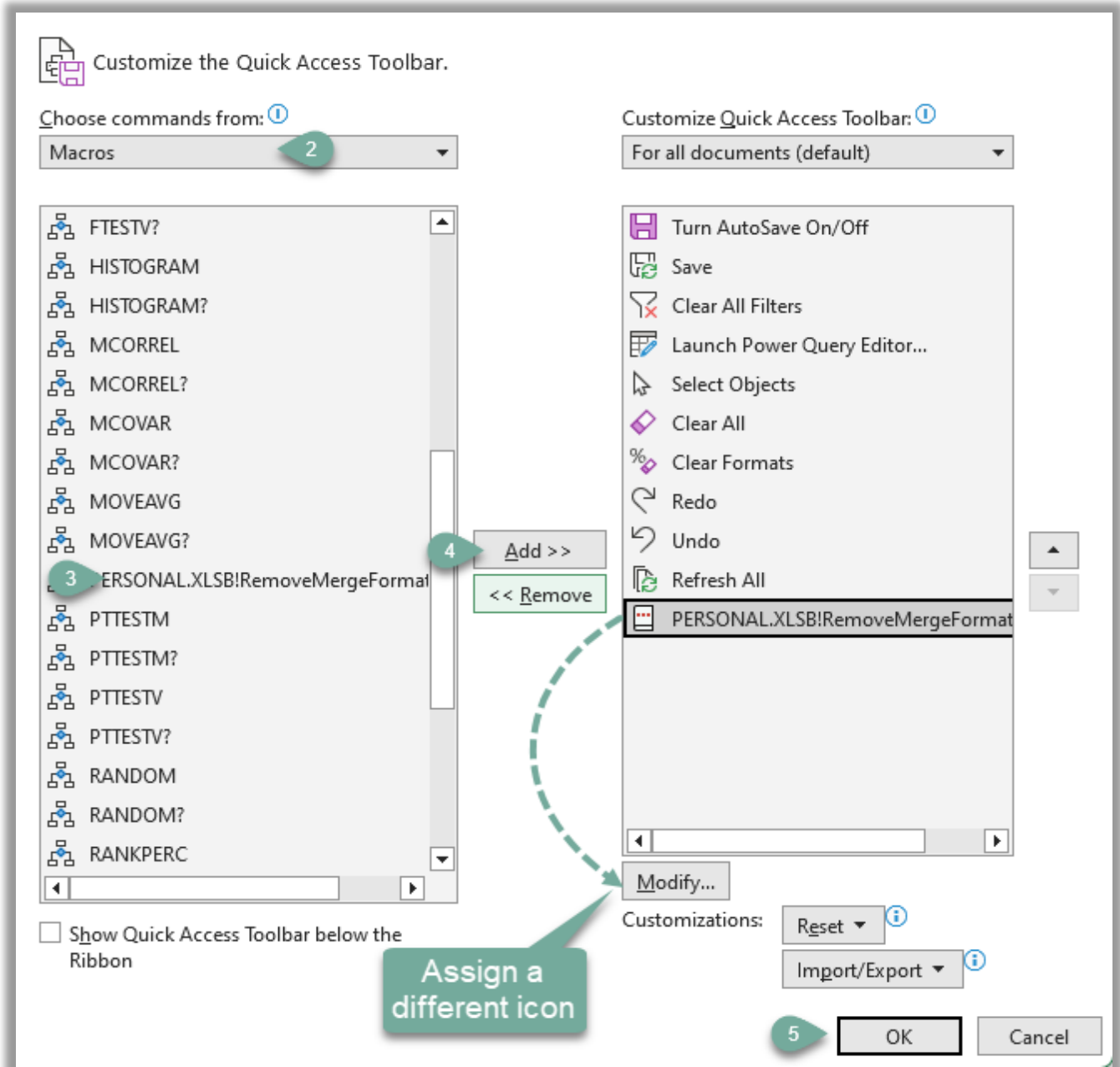
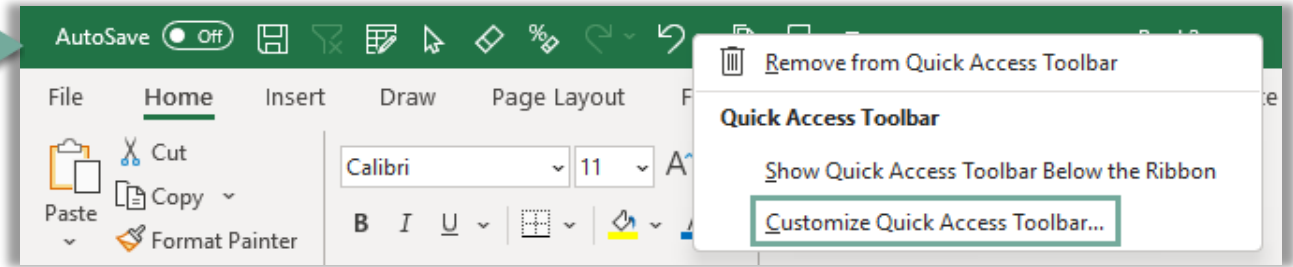
Click here if you don't have a PERSONAL.XLSB



SWIPE

Add Macro to Quick Access Toolbar

1



Using the Macro



The screenshot shows the Microsoft Excel interface. The ribbon is set to 'Home'. A hand icon points to the 'Macro' icon in the 'Formulas' tab, with a callout bubble containing the number '2' and the text 'Click Macro Icon'. In the worksheet, a hand icon points to a merged cell containing '2020' and 'UK', with a callout bubble containing the number '1' and the text 'Select merged cells'. The data table below is as follows:

	A	B	C	D	E	F
3						
4		2020				
5		UK				
6		Bromley	232	24,757		
7		Coghill	81	4,029		
8		Farnham	170	14,056		
9		Gillingham	397	40,826		
10		Gloucester	209	31,433		
11		Rayleigh	422	59,827		
12						
13		USA				
14		Bromley	58	7,554		
15		Callahan	623	49,400		
16		Coghill	885	120,626		
17		Farnham	699	89,663		
18		Finchley	699	95,850		
19		Fuller	539	71,168		



Click Macro Icon

Select merged cells

SWIPE



I help you **STAND OUT** from the crowd with skills that will **TRANSFORM** your **CAREER**

 Get your skills up to speed with [my courses](#)
 [Follow me](#) for tips and tutorials



Mynda Treacy | Microsoft MVP

 **myOnlineTraininghub**